

McGraw-Hill Mathematics

Math Tool Chest
Primary Network

Math Tool Chest is a trademark of McGraw-Hill School Division.
AppleShare, Mac, Macintosh, and Power Macintosh are trademarks of Apple Computer, Inc., registered in the United States and other countries; System 7.6.1 is a trademark of Apple Computer, Inc.
Novell and NetWare are registered trademarks of Novell, Inc.
Windows and Windows NT are registered trademarks of Microsoft Corp.
Sound Blaster is a registered trademark of Creative Technology Ltd.
IBM is a registered trademark of IBM Corp.
Adobe and Adobe Acrobat are registered trademarks of Adobe Systems.

All other products are trademarks or registered trademarks of their respective owners.

LIMITED WARRANTY: THIS MANUAL IS INTENDED TO ASSIST IN THE USE OF MATH TOOL CHEST INTERMEDIATE EDITION AND WILL HELP YOU MASTER THE FUNCTIONS, FEATURES AND USE OF THE PRODUCT, WHICH HAS BEEN PREPARED WITH GREAT CARE TO HELP YOU ACHIEVE YOUR EDUCATIONAL OBJECTIVES.

MCGRAW-HILL SCHOOL DIVISION PROVIDES YOU WITH THE LIMITED WARRANTY WHICH IS FURNISHED IN THE SOFTWARE LICENSE AGREEMENT WHICH ACCOMPANIES THE PRODUCT. OTHERWISE, THIS MANUAL AND PRODUCT ARE SOLD "AS IS," WITHOUT WARRANTY AS TO CONTENT, USE, PERFORMANCE, OR THE RESULTS OBTAINED FROM USE OF THE MANUAL OR THE PRODUCT. IN ADDITION, ALL WARRANTIES OF MERCHANTABILITY OR FITNESS FOR ANY PARTICULAR PURPOSE ARE ALSO EXCLUDED.

IN NO EVENT, WHETHER AS A RESULT OF BREACH OF CONTRACT, WARRANTY, OR TORT (INCLUDING NEGLIGENCE), WILL MCGRAW-HILL SCHOOL DIVISION BE LIABLE FOR ANY DAMAGES, INCLUDING ANY LOST PROFITS, LOST SAVINGS, OR OTHER INCIDENTAL OR CONSEQUENTIAL DAMAGES ARISING OUT OF THE CONTENTS OR USE OF THIS MANUAL OR PRODUCT, INCLUDING LOSS OF RECORDS OR DATA, EVEN IF MCGRAW-HILL SCHOOL DIVISION HAS BEEN ADVISED OF THE POSSIBILITY OF SUCH DAMAGES, OR FOR ANY CLAIM BY ANY OTHER PARTY.

SOME STATES DO NOT ALLOW THE LIMITATION OR EXCLUSION OF WARRANTIES OR OF LIABILITY FOR INCIDENTAL OR CONSEQUENTIAL DAMAGES. IN SUCH EVENT, THE ABOVE LIMITATION OR EXCLUSION MAY NOT APPLY TO YOU.

McGraw-Hill School Division 
A Division of The McGraw-Hill Companies

Published by the McGraw-Hill School Division, a division of the McGraw-Hill Education Group of The McGraw-Hill Companies, Inc., 2 Penn Plaza, New York, NY 10121.
Copyright © by McGraw-Hill School Division.

All rights reserved. No part of this publication may be reproduced or distributed in any form or by any means, downloaded, or stored in a database or retrieval system, without the prior written permission of the publisher.

ISBN 0-02-111502-8

1 2 3 4 5 6 7 8 9 102 02 01 00

Contents

Welcome	1
About Math Tool Chest	2
Sections of This Guide	3
Getting to Know This Guide	4
Additional Math Tool Chest Documentation	6
Installation	7
System Requirements	8
Macintosh Installation	9
Windows Installation	11
Getting Started & Setting Up.....	13
Starting the Program	14
Using Teacher Options to Set Up	14
Introducing Math Tool Chest to Students	14
Getting Students Started	15
Creating a List of Student Names	16

Math Tool Chest Basics	17
The Tools Menu	18
Workmat Features	20
Using the Open Button	22
Show Me How Videos	23
Getting Help	24
Textbook Correlation Charts	25
Grade K	26
Grade 1	30
Grade 2	35
Graphs	39
Using Graphs	40
Counters	45
Using Counters	46
Using the Counters Open Workmat	50
Using the Counters Part-Part-Total Workmat	52
Using the Counters Addition Workmat	54
Using the Counters Subtraction Workmat	56
Place Value	59
Using Place Value	60
Using the Place Value Open Workmat	64
Using the Place Value Chart	66
Using the Place Value Addition Workmat	68
Using the Place Value Subtraction Workmat	70

Attributes	73
Using Attributes	74
Using the Attributes Open Workmat	78
Using One Sorting Ring	80
Using Two Sorting Rings	82
Pattern Blocks	83
Using Pattern Blocks	84
Fractions	89
Using Fractions	90
Working with Parts of a Shape	94
Working with Parts of a Set	96
Tables	99
Using Tables	100
Using Words and Numbers Tables	106
Using Tally Charts	108
Money	111
Using Money	112
Using the Money Open Workmat	116
Using the Money Addition Workmat	118
Using the Money Subtraction Workmat	120
Math Journal	123
Using Math Journal	124
Using the Drawing Tools	128

Calculator	131
Using the Calculator	132
Using the Calculator Keys	134
Teacher Options & Assessment Techniques	135
Teacher Options	136
Assessment Techniques	140
Troubleshooting	141
Software Support	142
Index	143



Installation

This chapter outlines system requirements necessary to install and run Math Tool Chest Primary on networked computers, as well as instructions for installing the product to a network workstation and file server. Before you continue, be sure your server and workstations meet these respective requirements.

System Requirements

Network Server

Math Tool Chest works on a variety of network configurations. The capabilities and setup of your server and its connected workstations affect the overall speed and performance of the product. Because of the wide variety of network server configurations, the following information is only a guide.

Macintosh® and Windows®

- One of the following:
 - Microsoft® Windows NT® Server 3.5.1 with Service Pack 5
 - Microsoft Windows NT Server 4.0 with Service Pack 4 or higher
 - Windows 2000 with Service Pack 4 or higher
 - Novell® NetWare® 4.11, 4.2, or 5.0
 - AppleShare® 6.1
 - Mac® OS X
- Approximately 370 MB server space

Macintosh Workstation

- Power Macintosh®
- System 7.6.1® or higher
- 16 MB available RAM (minimum)
- 16 MB available hard drive space (minimum)
- 13-inch color monitor or larger, displaying 256 colors
- 2x CD-ROM drive (4x or higher recommended)
- Adobe Acrobat Reader 4.0 (included on Math Tool Chest CD-ROM)

- QuickTime™ 4.0 or higher (included on Math Tool Chest CD-ROM)
- Mouse
- Printer recommended

Windows Workstation

- IBM®-compatible 486DX/66 MHz or higher
- Microsoft Windows 95, Windows 98, Windows 2000, or Windows NT Workstation 4.0 with Service Pack 4 or higher
- 16 MB available RAM (minimum)
- 16 MB available hard drive space (minimum)
- SVGA monitor displaying 256 colors
- 2x CD-ROM drive (4x or higher recommended)
- Adobe Acrobat Reader 4.0 (included on Math Tool Chest CD-ROM)
- QuickTime 4.0 or higher (included on Math Tool Chest CD-ROM)
- Sound Blaster®-compatible sound card
- Speakers
- Mouse
- Printer recommended

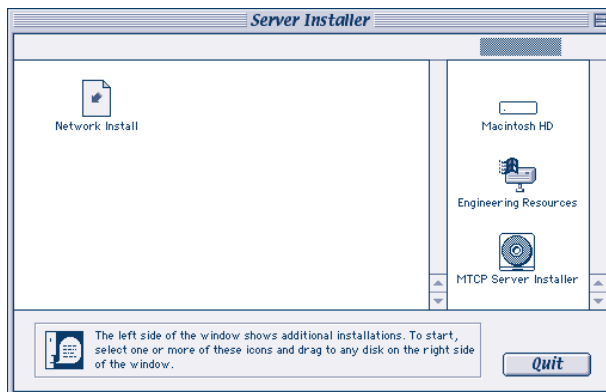
Macintosh Installation

Use these steps to install to a Macintosh network server and workstations. Complete the server installation before installing to workstations. During server installation, your computer cannot perform other functions.

Installing to a Macintosh Server

Perform these steps from any workstation that has read and write access to the server:

1. Start your computer. Quit any open applications.
2. From the Apple menu, open Chooser.
3. Click AppleShare and choose a network volume. Then click OK. If prompted, sign in with your user name and password.
4. Close the Chooser window.
5. Insert the Math Tool Chest Primary Network CD into the CD-ROM drive.
6. Open the CD window and double-click the Server Installer icon. Click to continue. The Network Install icon appears.



7. Click the Network Install icon and drag it to the desired volume on the right side of the window. A progress bar indicates file transfer (66 MB) to the server. The files have now been copied to a folder named MTCP on the network volume.

8. Click Quit to exit the Installer.

9. Click the Movies folder in the CD window and drag it to the MTCP folder on the network volume. A progress bar indicates file transfer (254 MB) to the server.

This step ensures that the Show Me How videos are available to teachers and students. Without this step, they will not be able to access the videos even though a desktop alias will appear on network workstations.

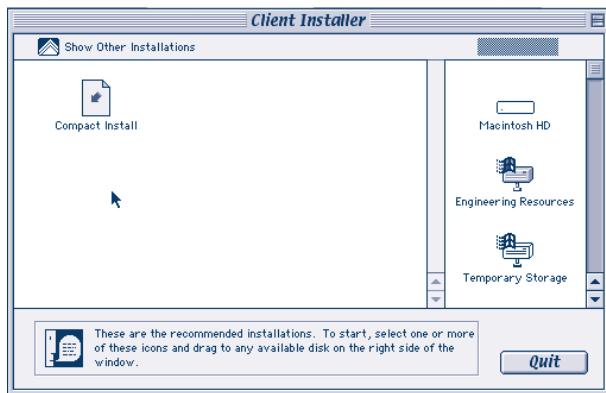
Note

Refer to Math Tool Chest Basics for information about how to open Show Me How videos.

Installing to a Macintosh Workstation

Perform these steps to place Math Tool Chest Primary Network in a folder on a Macintosh workstation within an existing network:

1. Open the volume on the server where you installed Math Tool Chest Primary.
2. Open the folder called MTCP and then double-click the Client Installer.
3. Click anywhere in the window. The Client Installer screen appears.



4. Click Compact to choose the option that uses less hard drive space. Or, click the Show Other Installations button to choose a Full installation, which copies all program files to your hard drive.
5. Drag the installer to the volume on the right side of the screen (your hard drive). A progress bar indicates file transfer (about 86 MB for a Full installation).

6. Click Quit. Two program aliases have been created on your desktop: one for Math Tool Chest Primary Network and another for the Show Me How videos.

About QuickTime

QuickTime is needed to view Show Me How videos. If you do not have QuickTime 2.5 installed on your computer, Math Tool Chest will install it automatically.

If you want a more recent version, QuickTime 4.0 is available on the CD. To install it, follow these steps:

1. Open the QuickTime folder in the CD window.
2. Double-click QuickTime Installer and follow the onscreen instructions.
3. When QuickTime installation is complete, the program will prompt you to restart your computer.

Macintosh Workstation Uninstall

To uninstall Math Tool Chest Primary Network, drag the program folder from your hard drive to the Trash. After you perform a Macintosh Workstation Uninstall, you can still retrieve student data by accessing the folder MTCPDATA on the server.

Windows Installation

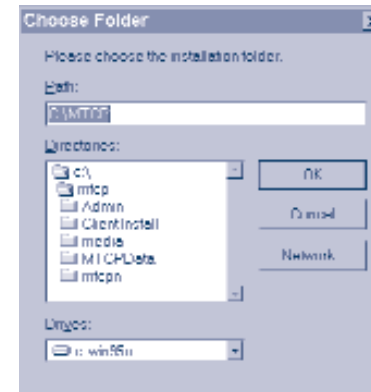
Use these steps to install Math Tool Chest Primary Network to a Windows-compatible network server and workstations. Complete the server installation before installing to workstations. During server installation, your computer cannot perform other functions.

Installing to a Windows Server

Perform these steps from any workstation that has read and write access to the server:

1. Start your computer. Quit any open applications.
2. When the desktop appears, insert the Math Tool Chest Primary Network CD into the CD-ROM drive.
3. Follow these steps to map a drive from your workstation:
 - a. Double-click Network Neighborhood.
 - b. Double-click the server where you want to install the program.
 - c. Right-click the volume where you want to install the program.
 - d. Select Map Network Drive. Assign a drive letter or choose the default. Be sure you remember the drive letter assigned.
 - e. To create a folder for the files, right-click in the window and select New Folder. Give the folder a name of eight characters or less, such as MTCPN.

4. Return to the Math Tool Chest Primary CD window and click SETUP.EXE.
5. Click Next and then click Browse. Use the Drives menu to choose the drive you just mapped.
6. Double-click the folder you just created (such as "MTCPN"). Click OK.



7. Click Next. A status bar indicates file transfer (about 80 MB). Transfer time varies, depending on your server. The Installation Complete screen appears.
8. Click Finish to complete installation.

Note

Refer to *Math Tool Chest Basics* for information about how to open Show Me How videos.

Installing to a Windows Workstation

Workstation installation places Math Tool Chest Primary Network in a folder on a workstation within an existing network.

1. Double-click My Computer and then double-click the mapped drive containing Math Tool Chest Primary.
2. Double-click the Client Install folder.
3. Double-click the SETUP.EXE icon. The Welcome screen appears.
4. Click Next.
5. Click Next to accept the default installation location, C:\MHSCHOOL. To install to a different location, click Browse and select a location. The Setup screen appears.
6. Select Compact or Full. Compact uses less hard drive space. A status bar indicates the file transfer. Once the transfer is complete, QuickTime installation will launch automatically.
7. Click Finish to complete installation.

If You Need to Install QuickTime 4.0

1. If QuickTime is not already installed on your computer, a message prompts you to begin the installation process. Follow the onscreen instructions.
2. When QuickTime installation is complete, the program will prompt you to restart your computer.

Windows Workstation Uninstall

1. From the Start button, point to Programs.
2. Point to the McGraw-Hill School folder (or to the location where the program has been installed).
3. Click Math Tool Chest Primary Network.
4. Click Uninstall Math Tool Chest Primary Network.

Note that after you perform a Windows Workstation Uninstall, you can still retrieve student data by accessing the folder MTCPPDATA on the server.